



CLARK COUNTY SCHOOL DISTRICT
Innovative Teaching and Learning Unit
Technology & Information Systems Services Division
Employee Business Training Department

SAP System Settings

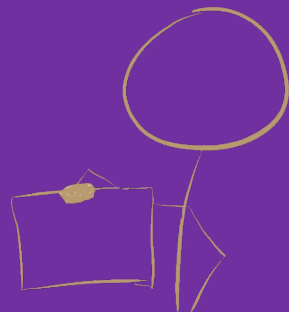


TABLE OF CONTENTS

Monitor Resolution	3
Verify Screen Resolution	3
Internet Browsers	4
Internet Explorer Settings	4

SAP System Settings

This guide provides detailed instructions for verifying and/or changing all systems settings required for the SAP system.

Monitor Resolution

Certain monitor resolution settings are required for working in the SAP system. The minimum screen resolution should be set NO LOWER than 1024 X 768. If the screen resolution is at a higher setting, no adjustments are necessary.

Verify Screen Resolution

To verify the screen resolution settings:

1. Click the **START** button
2. Select **CONTROL PANEL**

If your computer displays the *Category* view:

3. Select **ADJUST SCREEN RESOLUTION** from the *Appearance and Personalization* category.

If your computer displays the *Icon* view:

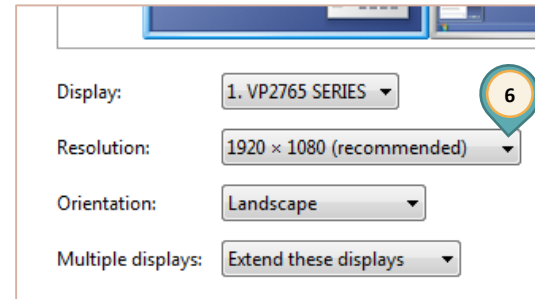
3. Select **DISPLAY**
4. Select **ADJUST RESOLUTION** from the task pane on the left
5. Verify that the *Resolution* setting is 1024 X 768 or higher

To change the *Resolution*

6. Click the **RESOLUTION** drop-down arrow
7. Select the appropriate setting.
8. Click **APPLY**

A pop-up will appear asking to verify the display settings.

9. Click **KEEP CHANGES**
10. Click **OK**



Internet Browsers

The currently supported Internet browser is Internet Explorer (IE) 8. Although other browsers may appear to function properly with the SAP system, only IE will be supported and all users will be directed to utilize this browser and settings as described below.

Internet Explorer Settings

It has been determined that the following settings should be verified and/or applied for use of IE with the SAP system.

To access Internet Options, open Internet Explorer.

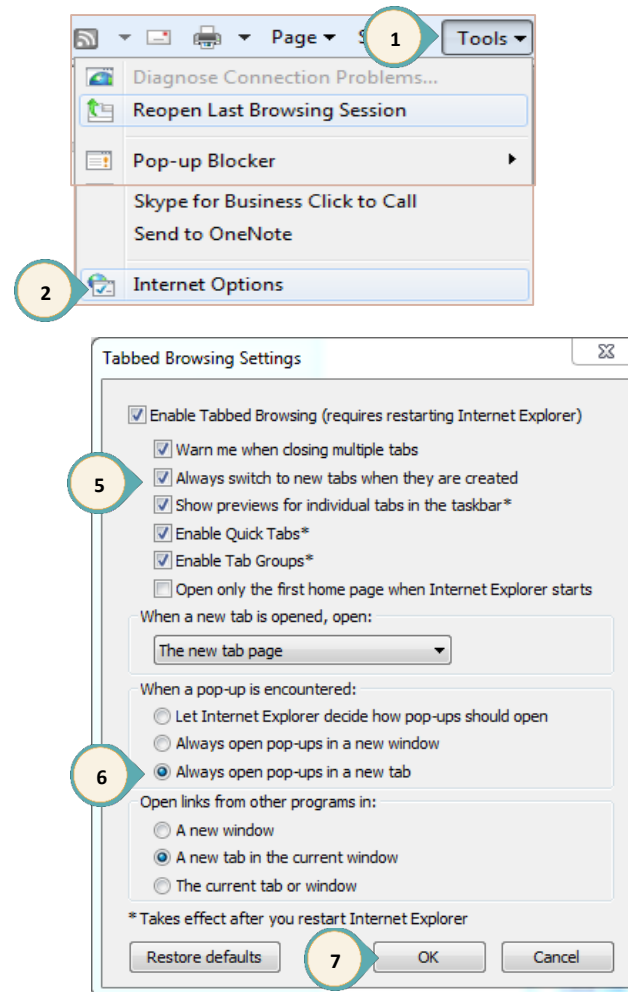
1. Select **TOOLS**
2. Select **INTERNET OPTIONS**

The Internet Options pop-up window is displayed.

3. Select **GENERAL**
4. Click the **SETTINGS** button from the *Tabs* section

The Tabbed Browsing Settings pop-up window is displayed.

5. Select **ALWAYS SWITCH TO NEW TABS WHEN THEY ARE CREATED**
6. Select **ALWAYS OPEN POP-UP IN A NEW TAB**
7. Click **OK**



You are returned to the Internet Options pop-up window.

8. Select **PRIVACY**

9. Click the **SETTINGS** button from the *Pop-up Blocker* section

The Pop-up Blocker pop-up window appears.

10. Type ***.ccsd.net** in the *Address of Website* field

11. Click **ADD**

12. Verify the address has been added

13. Click **CLOSE**

You are returned to the Internet Options pop-up window.

14. Click **OK**

